

# Secure Airport CDM & SWIM

## Airport Collaborative Decision Making (A-CDM)

Airports today are increasingly facing inefficient use of airport infrastructure, limited airport throughput, poor airport slot compliance, and frequent late stand & gate changes. The reason is often inadequate information flow:

- ▶ Information exists around the airport in various systems, but is not readily available to all partners
- ▶ Information systems of the various partners have been built independently;
- ▶ Some partners are reluctant to share sensitive information.

Airport CDM tries to replace the current central planning paradigm with a collaborative process where information owned by individual partners is shared amongst all in a useful system-wide representation (shared situational awareness).

## System Wide Information Management (SWIM)

SWIM facilitates such general information accessibility across all involved stakeholders. In short, SWIM provides the mechanisms which support the partners in managing information sharing. This determines which kind of information is shared by whom, with whom, where, when, why, how, how much, how often, at which quality level, in what form, for which purpose, at which cost, under which liability, under which circumstances, security levels.

## Security management is a critical enabler

Good information security policy management, in addition to appropriate security mechanisms are a critical enabler for A-CDM/SWIM. Without manageable security, partners will refuse to share commercially sensitive information. Moreover, information consumers will not be able to rely on the information provided.

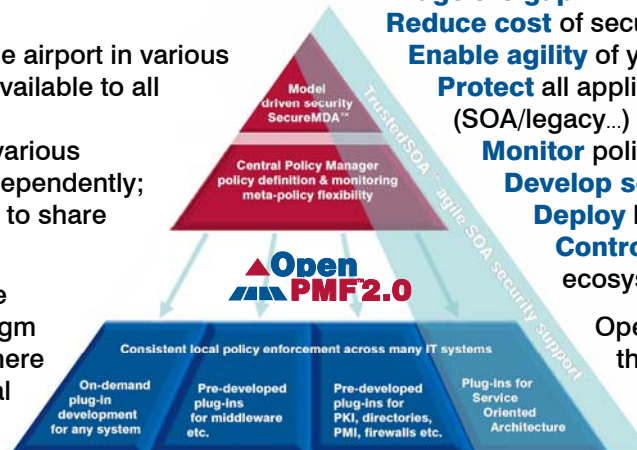
## Clients

Agilent Technologies, Artechhouse, BAA Heathrow Airport, Deutsche Telekom, ESG, European Commission, FutureTek, General Electric, Intel, QinetiQ, Royal Bank of Scotland, Real-Time Innovations, Twinsoft/Hewlett-Packard, US Naval Research Lab, and more...

## OpenPMF 2.0 Simplified Security Management

To solve this complex problem, we have developed a complete technology suite with OpenPMF at its core. It simplifies security management:

- Bridge the gap** between business and IT security
- Reduce cost** of security management & enforcement
- Enable agility** of your IT environment with security
- Protect** all applications consistently (SOA/legacy...)
- Monitor** policy compliance
- Develop secure** software easily
- Deploy** low-risk with lowered cost hurdle
- Control** your future-proof security ecosystem



OpenPMF brings IT security back to the business, reduces costs, enhances IT agility, and improves security. It allows stakeholders to state their security

requirements in an intuitive business-driven way in a central security manager. These security requirements are automatically translated into security rules (using "Model Driven Security") and locally enforced across entire CDM infrastructure through OpenPMF plug-ins.

## Air Transportation A-CDM/SWIM Projects

- ▶ **BAA Heathrow** plans to use OpenPMF 2.0 within their Service Oriented Architecture (SOA). One benefit of OpenPMF will be easy-to-use and low-maintenance security management.
- ▶ **SWIM-SUIT** ObjectSecurity works on SWIM security in SWIM-SUIT, an EU project which is part of EUROCONTROL SESAR.
- ▶ **AD4** ObjectSecurity developed an OpenPMF based secure SWIM infrastructure for air traffic management as part of the AD4 EU project.

To learn more and get started, we invite you to talk with us about the solution that works for your needs and environment.

Please contact us at: [info@objectsecurity.com](mailto:info@objectsecurity.com).

[www.objectsecurity.com](http://www.objectsecurity.com)