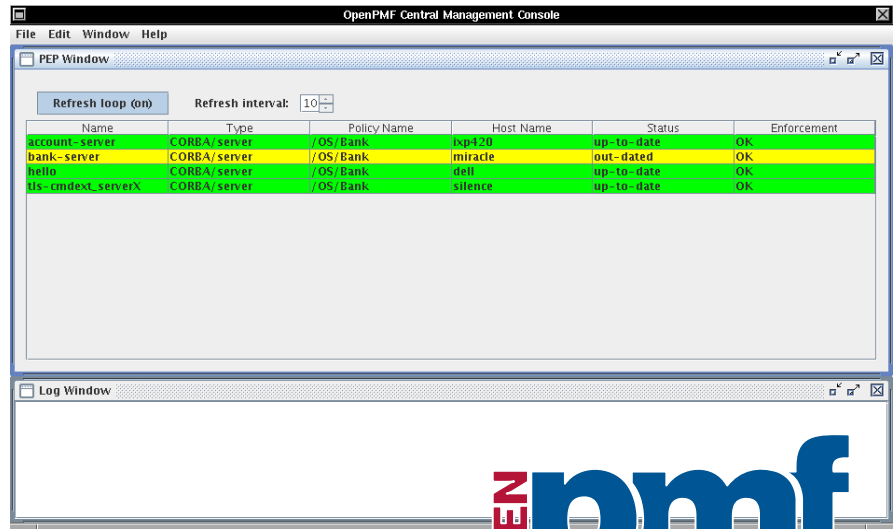


Press Release – ObjectSecurity releases new OpenPMF security management console

(Cambridge/UK – 15 May 2006) – ObjectSecurity, the leading solutions provider for centralised security management and middleware security in mission-critical industries such as air traffic control, announced today that it has released a new graphical console for OpenPMF.

OpenPMF is ObjectSecurity's technology framework and product that streamlines security policy administration for complex distributed systems. Its particular value lies in the centralised management of complex access policies, which offers far better manageability than traditional federated identity and access solutions can offer. In OpenPMF, a uniform security policy is stored in a central repository and automatically enforced on a

number of networked systems and interacting applications. The security is defined and monitored in a central graphical user interface.



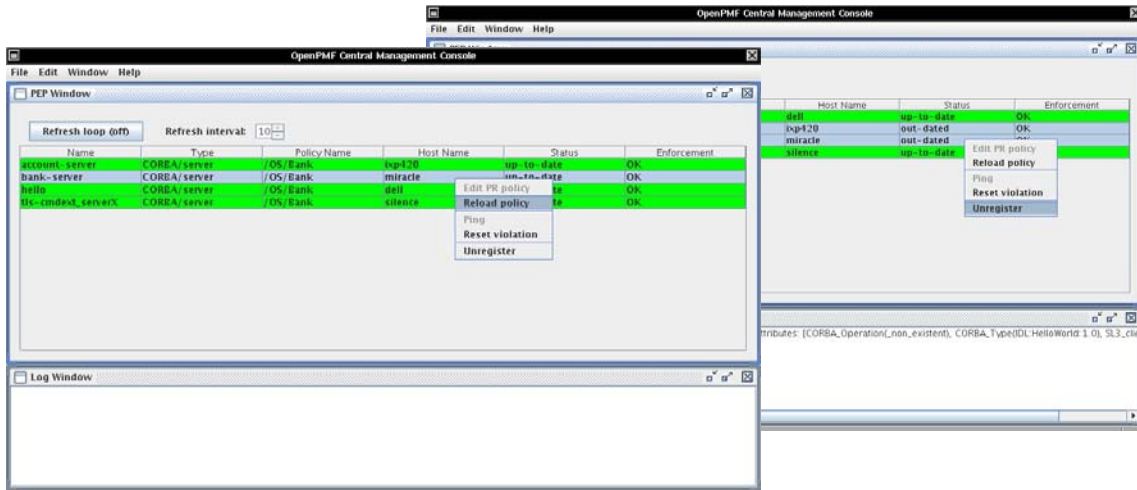
Here are five good reasons to choose OpenPMF:

- ▶ Centralised security - Security policies are specified and verified in a single human-readable view. These guidelines can be specified for practically any number of underlying IT systems and applications. They can be rapidly and accurately updated to suit your requirements.
- ▶ Access policies - Unlike other solutions that focus only on single sign-on, OpenPMF also consolidates complex access policies.
- ▶ Automatic enforcement - OpenPMF uses a highly flexible architecture that tightly integrates with systems and applications. Uniform security guidelines can be automatically enforced by OpenPMF throughout your network. Changes are automatically updated and reinforced.
- ▶ Single sign-on - OpenPMF supports single-sign-on (SSO), making log-in easier for the user. OpenPMF eliminates multiple log-ins for separate resources, reducing repetition and user frustration.
- ▶ Simplified compliance checking - Because security guidelines are centralised and available in a single format for all protected systems, compliance with the overall security targets can be verified much more easily than in traditional, dispersed systems.

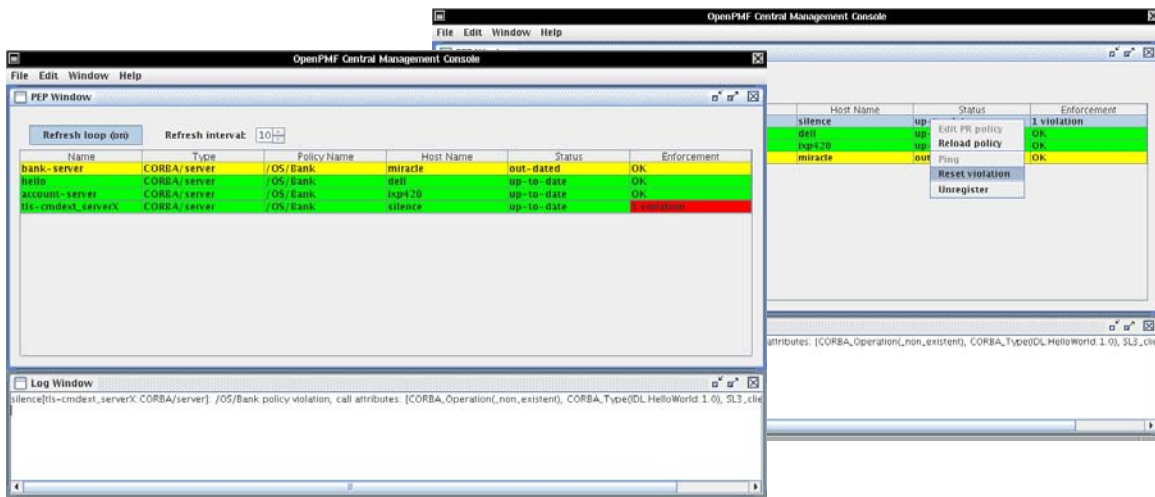
The main benefits of OpenPMF are reduced complexity/cost, and more effective security.

OpenPMF GUI functionality

This console version allows setting and monitoring the security state of the nodes of the protected IT infrastructure. It shows the live policy enforcement points (PEPs) in a tabular form. The colours indicate whether a PEP is alive and updated. To provide ease of use, rows can be sorted by clicking. The GUI allows administrators (1) to reload the policy for a selected PEP, (2) to reset the violation display and set the enforcement field back to OK once a problem is solved, (3) to deregister a selected PEP from the GUI, and (4) to test whether a PEP is alive or not.



The log window content can be selected, copied to the clipboard, and cleared. Finally, the OpenPMF PDL policy can be edited and reloaded into OpenPMF “on the fly”.



To learn more and get started, we invite you to talk with us about the solution that works for your needs and environment. Please contact us at: info@objectsecurity.com. www.objectsecurity.com